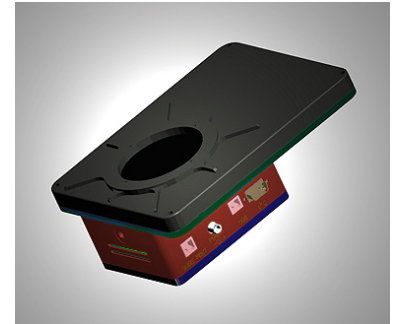




a division of Aplegen, Inc.

## FW8-8300

### 8-Position, 36mm Filter Wheel for the ST-8300 and ST-4000 Cameras



#### Features:

- Holds eight 36mm drop in filters for un-vignetted imaging at any f/ratio with the ST-8300.
- Small footprint – 6.3 x 8.1 inches.
- Weighs only 830g (approx. 29 oz.).
- Thin design – allow the use of optional Nikon, Canon FD and Canon EOS lens adapters with the filter wheel.
- Uses the cameras' I2C port for power and commands. No additional cable to computer or power supply is required.
- Inserts are available for 1.25" filters.

The 8-position filter wheel is only about an inch larger in width and length than the 5-position wheel. It is the same thickness as the 5-position wheel and has the same front cover design so that any accessories, such as the Nikon and Canon EOS lens adapters, will work with either filter wheel. Complete LRGB and narrowband filter sets in 36mm size by Baader Planetarium and Astrodon are available from SBIG and we are informed that complete sets of 36mm unmounted filters are also available from Astronomik and other filter suppliers. SBIG offers optional inserts for the FW8-8300 and FW5-8300 filter carousels that will accommodate 1.25" filters if required.



The telescope side of the filter wheel has a round adapter plate with standard t-threads. This piece can easily be removed and replaced with an optional Nikon lens adapter.

#### FW8-STL Adapter plate

In addition to the FW5-8300 and FW8-8300 36mm filter wheels, we have also designed an adapter plate that will mate the ST-8300 to our FW8-STL, 8-position 2" filter wheel for those who may already have 2" filters. The FW8-STL will hold both 2" mounted filters and 50.8mm unmounted filters.

© 2011 Aplegen, Inc. All rights reserved. The Aplegen wordmark and logo are trademarks of Aplegen, Inc. All other trademarks, service marks and tradenames appearing in this brochure are the property of their respective owners.

Santa Barbara Instrument Group, a division of Aplegen, Inc. | 147-A Castilian Drive, Goleta, CA 93117  
t 805.571.7244 | f 805.571.1147 | w [www.sbig.com](http://www.sbig.com) | e [sbig@sbig.com](mailto:sbig@sbig.com)